



# DESIGN UPDATE

**Glenbard THSD 87  
Board of Education  
March 24, 2025**



# Glenbard THSD 87

## Design Update

### AGENDA

- Schedule Update/Phasing
- Building Updates
  - Plan
  - Images
- Next Steps
- Questions







Glenbard THSD 87

## SOUTH HIGH SCHOOL GROUNDBREAKING







Glenbard THSD 87

## SOUTH HIGH SCHOOL GROUNDBREAKING







# Glenbard THSD 87

## Proposed Construction Phasing

### Preliminary Schedule for Bidding & Construction

Bid Release	Description of Work	Bid Award	Construction Start	Construction Completion
BR1	2025 CIP Work: N-S-E-W	November 11, 2024	May 2025	August 1, 2025
BR2	2025 Exterior Improvement - S-W-E	February 24, 2025	March 31, 2025	September 29, 2025
BR3	Phase I: Visitor Entrance/Cafeteria - E	May 2025	October 2025	August 2026
BR4	2026 CIP Work: W-S	November 2025	May 2026	August 2026
BR5	Phase II: Commons/ CIP Curtainwall/ Classrooms - E	December 2025	March 2026	August 2027
BR6	Phase I: Addition/West Wing - W	September 2025	November 2025	April 2027
BR7	Phase I: Music Addition / CIP 2026 - N	January 2026	March 2026	August 2027
BR8	Phase II: Entrance/Commons/ Cafeteria - N	November 2026	June 2027	August 2028
BR9	Entrance/LRC/Commons/Band - S	December 2026	June 2027	August 2028
BR10	Phase II: Cafeteria/East Wings - W	May 2027	March 2028	August 2028
BR11	Biesters -W & Stadium - S	November 2028	March 2029	August 2029

\* Refer to handout for further detail on the anticipated design & construction timelines





# Glenbard THSD 87

## Summer 2025 Progress and Logistics

### Ongoing Efforts

- Weekly Owner/ Architect/ Construction Manager (OACM) Meetings
- Monthly construction reports beginning April 2025
- Ongoing coordination of logistics with Building Administration, PSI, Wold, and Gilbane

### Construction Milestones

- Glenbard South HS Groundbreaking Ceremony – 3/19/25
- Site Improvement Projects - Beginning Construction April 2025
- Selective abatement taking place over Spring Break
- Full abatement beginning 5/24/25
- Summer 2025 construction starting 5/27/25





# North High School

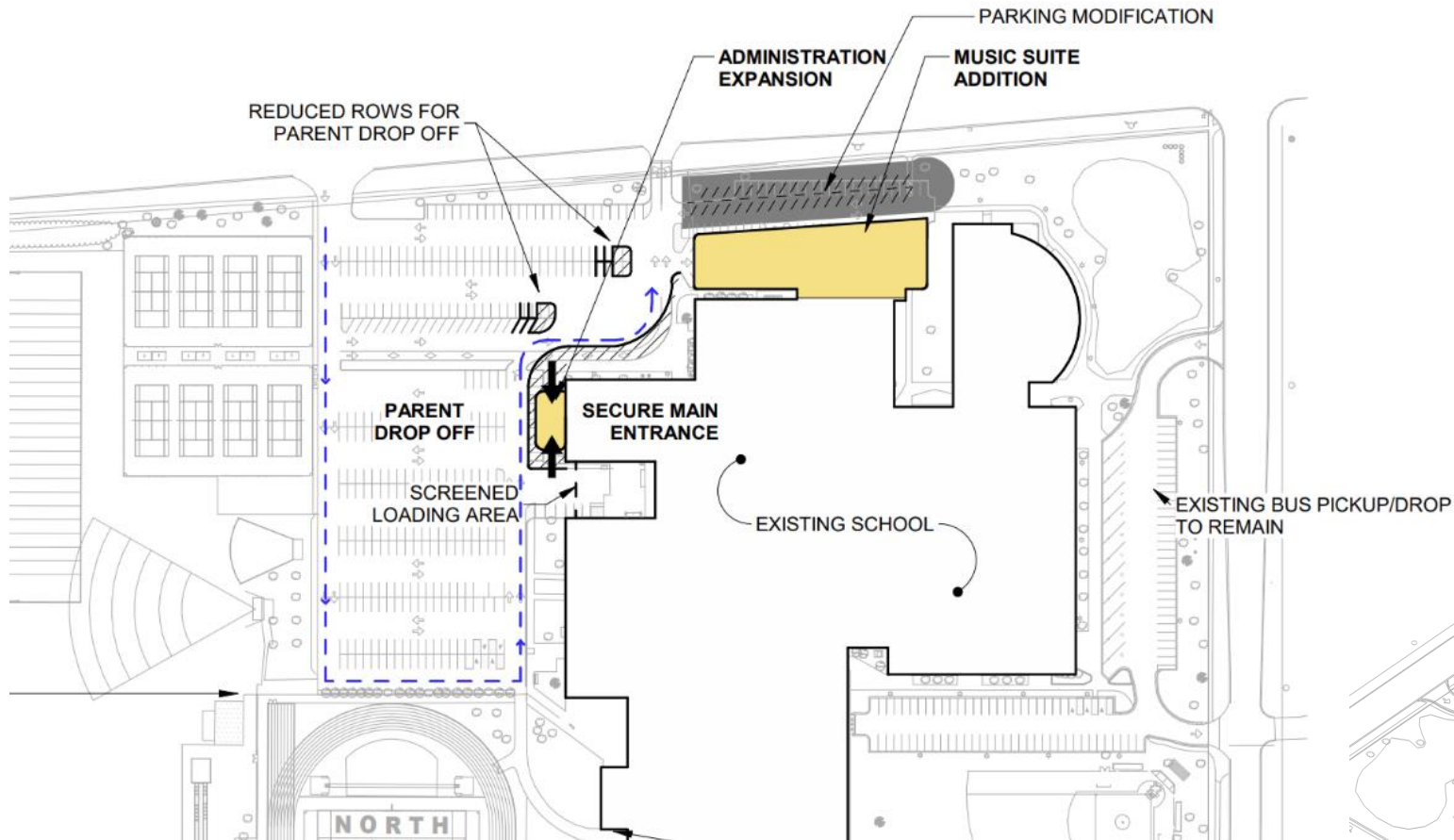
Design Development Phase

## Upcoming Milestones:

- Ongoing Core Planning Group Meetings
- User Input Updates
- Exterior Design Development
- Summer Construction Begins June 2025

# North High School

## Design Progress



### Site Plan Impacts

- Main Office and Fine Arts Additions
- Modifications to parking at area impacted by Fine Arts Addition
- Modifications to drop off sequence and parking to improve queuing at new Main Entrance

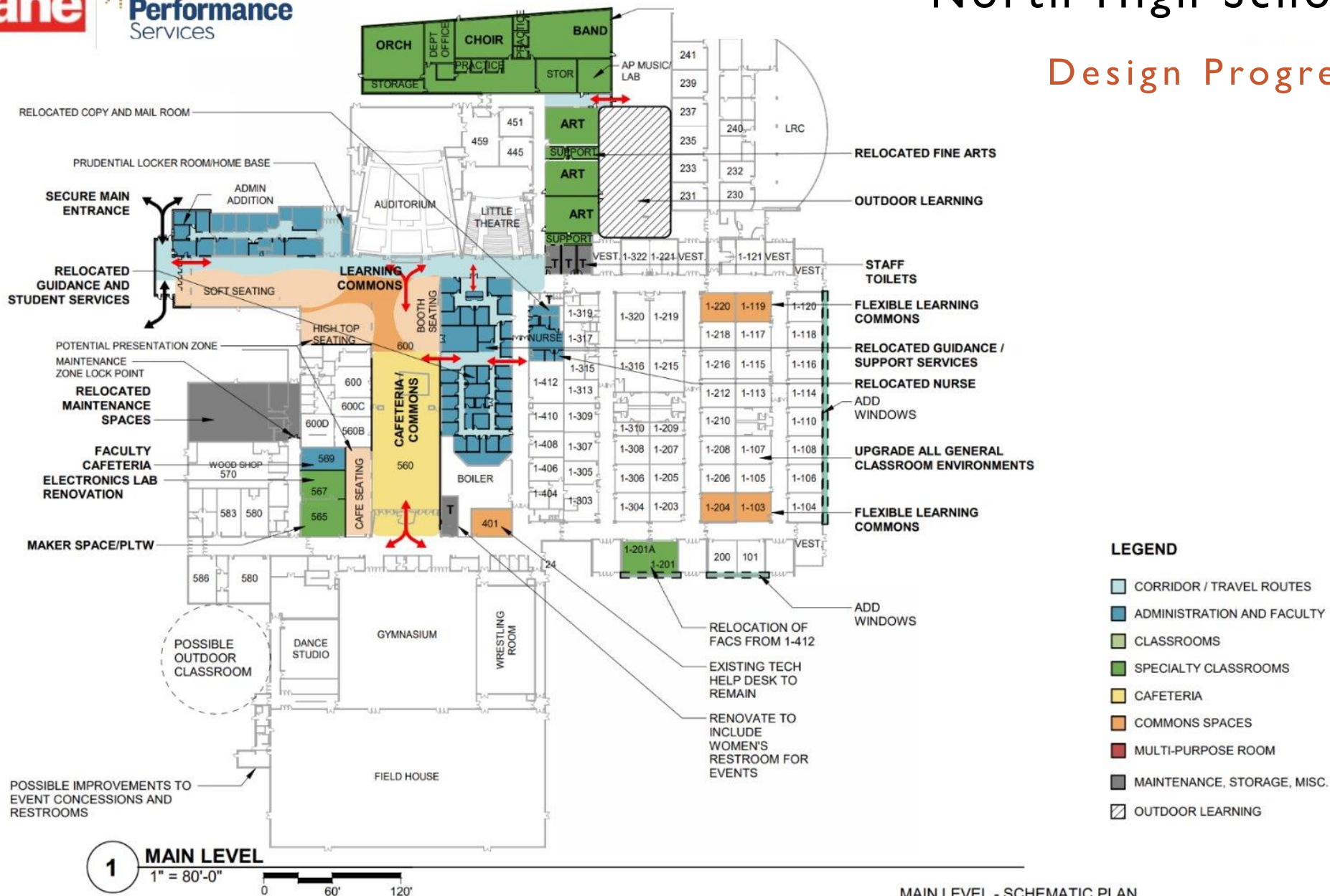






# North High School

## Design Progress



MAIN LEVEL - SCHEMATIC PLAN



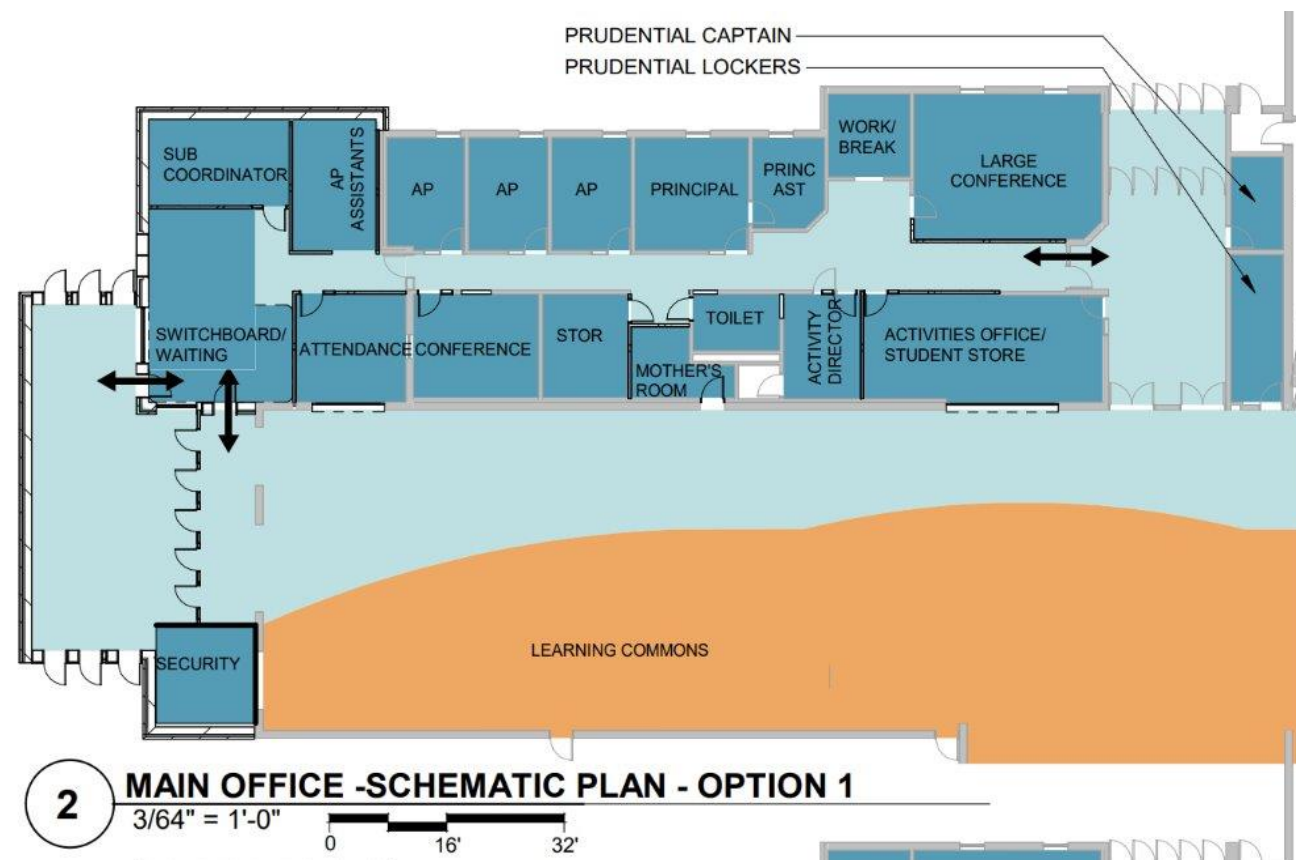


# North High School

## Design Progress



**1 FINE ARTS SCHEMATIC PLAN**  
1" = 30'-0"



**2 MAIN OFFICE -SCHEMATIC PLAN - OPTION 1**  
3/64" = 1'-0"





# East High School

## Construction Documents Phase

### Upcoming Milestones:

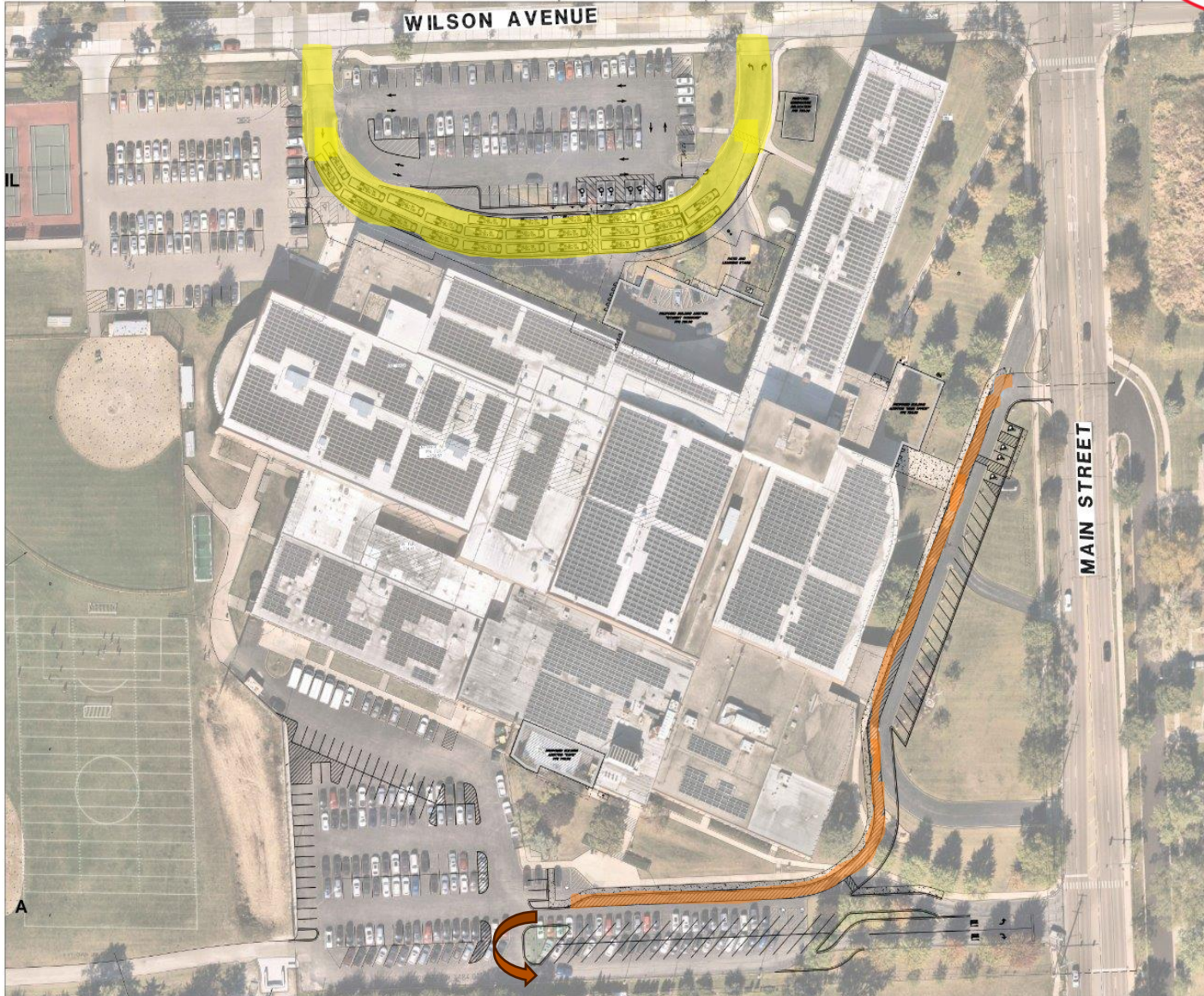
- Ongoing Core Planning Group Meetings
- Village Review Submission
- Bid Release 3 – Issues for Bid - April 2025
  - Cafeteria and Main Office Addition
- Summer Construction Begins June 2025

## SITE PLAN



# East High School

## Design Progress



### SITE PLAN IMPACTS

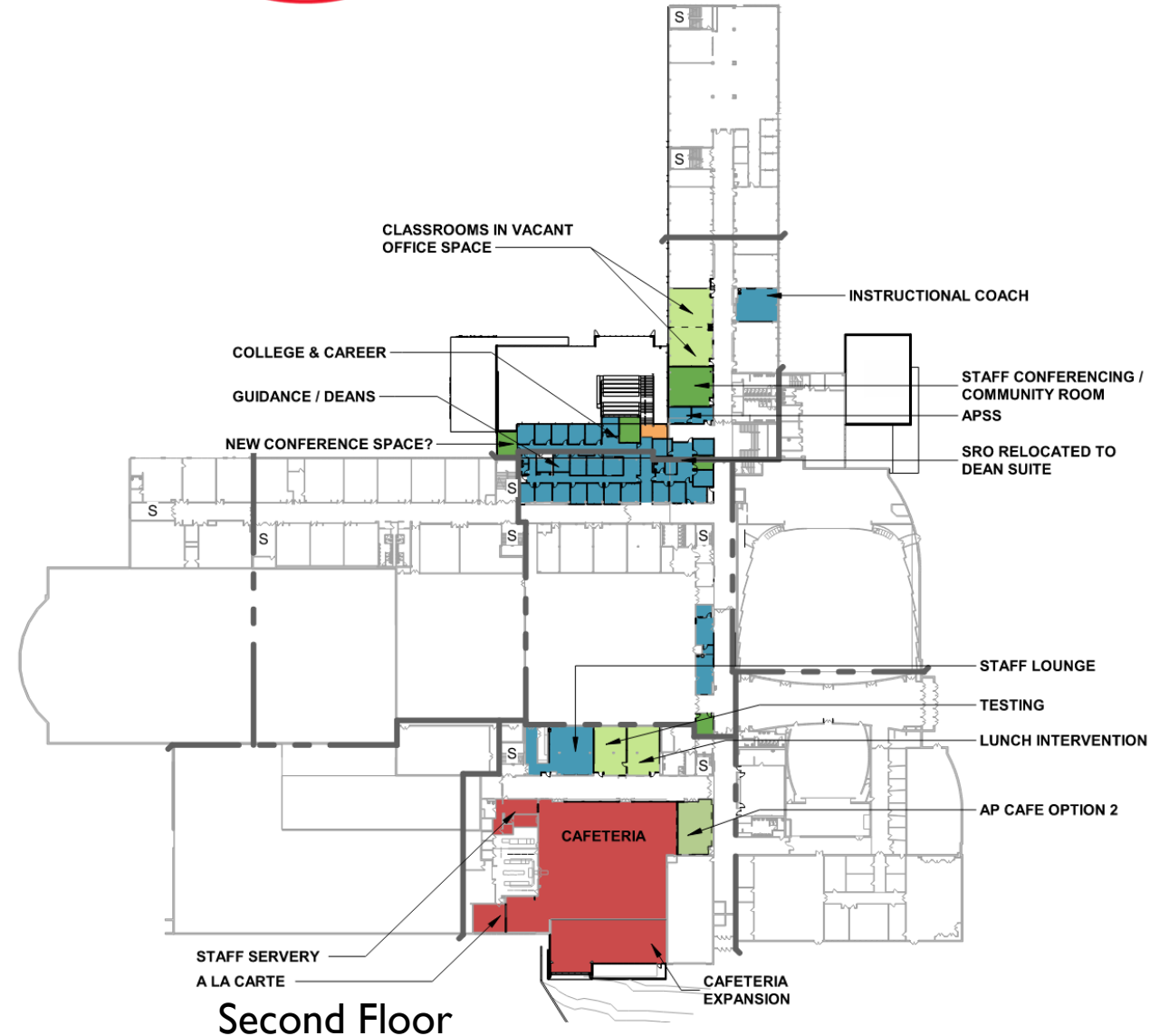
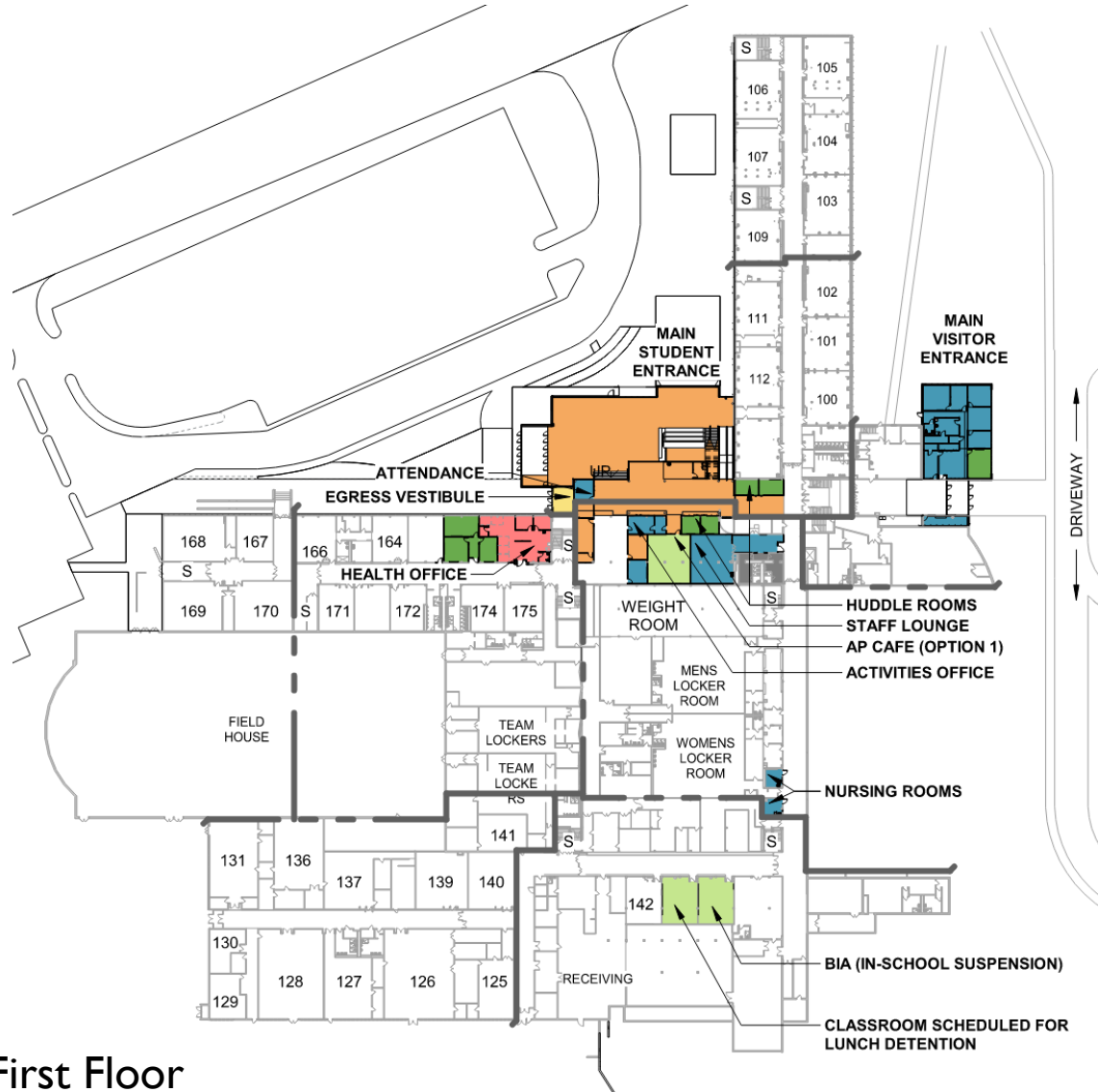
- Explorations for additional parking opportunities
- Relocated Main Visitor Entrance separate from Students
- Parent Drop-off/Pick-up occurs off Main Street with extended queueing zone
- Expanded Student Entrance to accommodate bus drop-off and security protocols





# Glenbard THSD 87

## Reference Floor Plans





**Gilbane**



**Performance  
Services**

VIEW FROM MAIN STREET



East High School

Curtainwall Design Update







LEARNING COMMONS/STUDENT ENTRANCE



East High School

Design Progress







East High School

Design Progress

VISITOR ENTRANCE ON MAIN STREET







CAFETERIA ADDITION VIEW



East High School

Design Progress

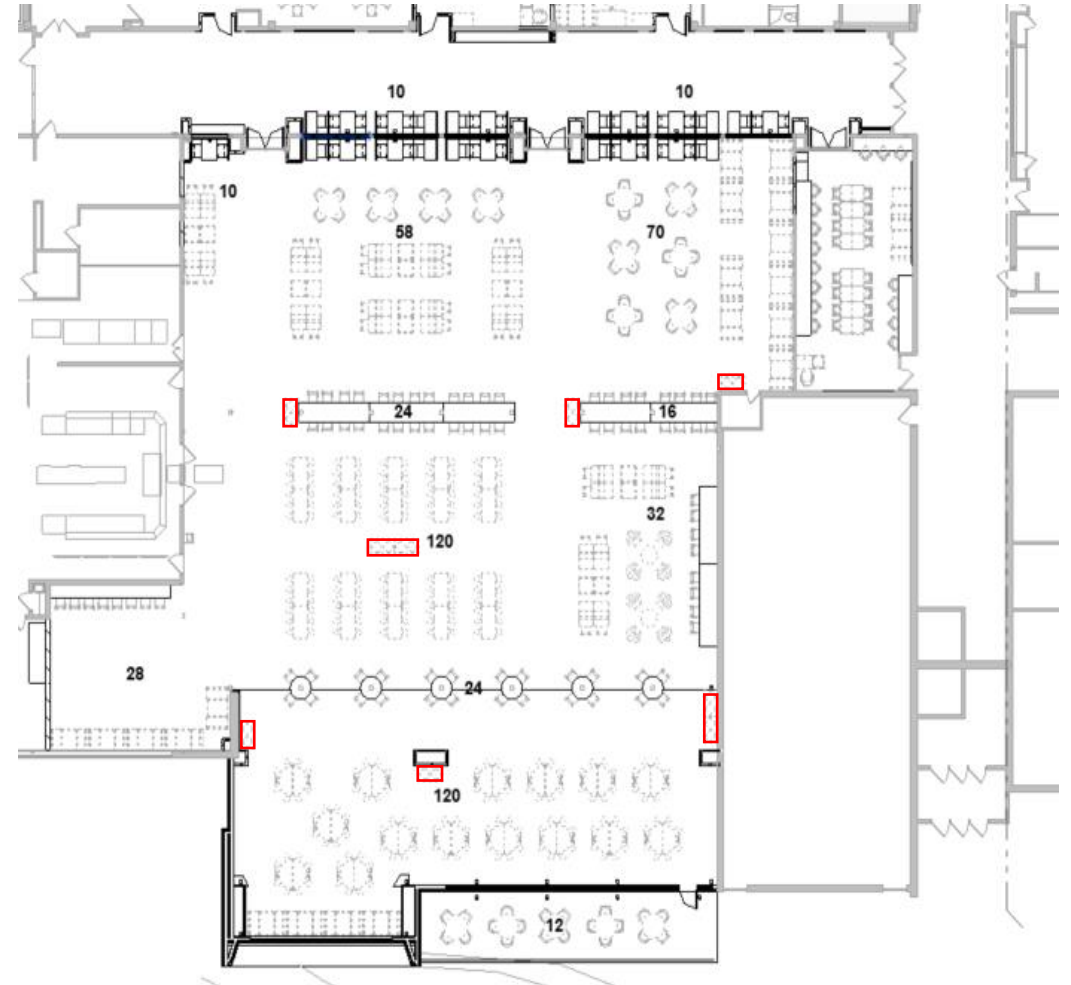






# Glenbard THSD 87

## Interior Design – Cafeteria







# Glenbard THSD 87

## Interior Design – Main Office and Entry

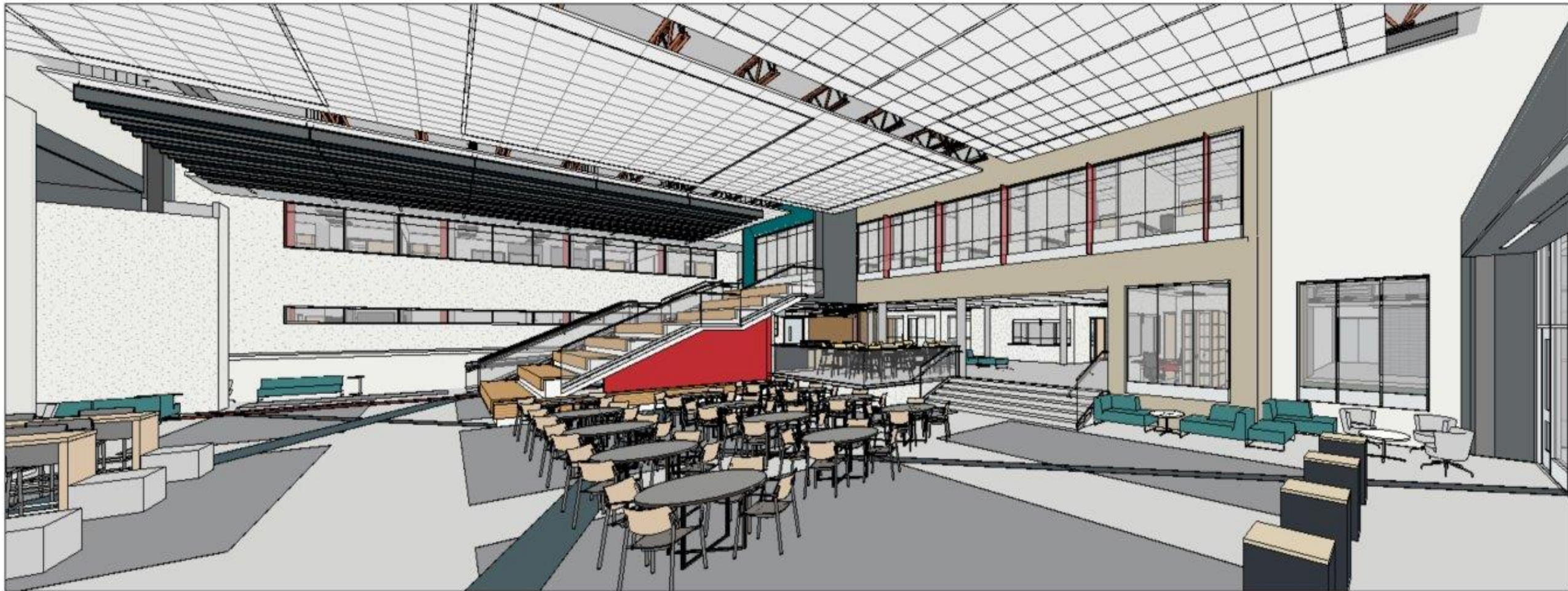




East High School

Design Progress

LEARNING COMMONS (PRELIMINARY)







East High School

Village Approval Updates

### **VILLAGE OF LOMBARD**

- Village Traffic Update Meeting – 3/14/25
- Next Steps:
  - Pre-Engineering Meeting (mid-April)
  - Pre-Application Meeting
- 90 Day process from the Pre-Application Meeting to Village Board Approval



# South High School

Design Development Phase

## Upcoming Milestones:

- Ongoing Core Planning Group Meetings
- User Input Sessions
- Summer Construction Begins April 2025



# South High School

## Window Design Update

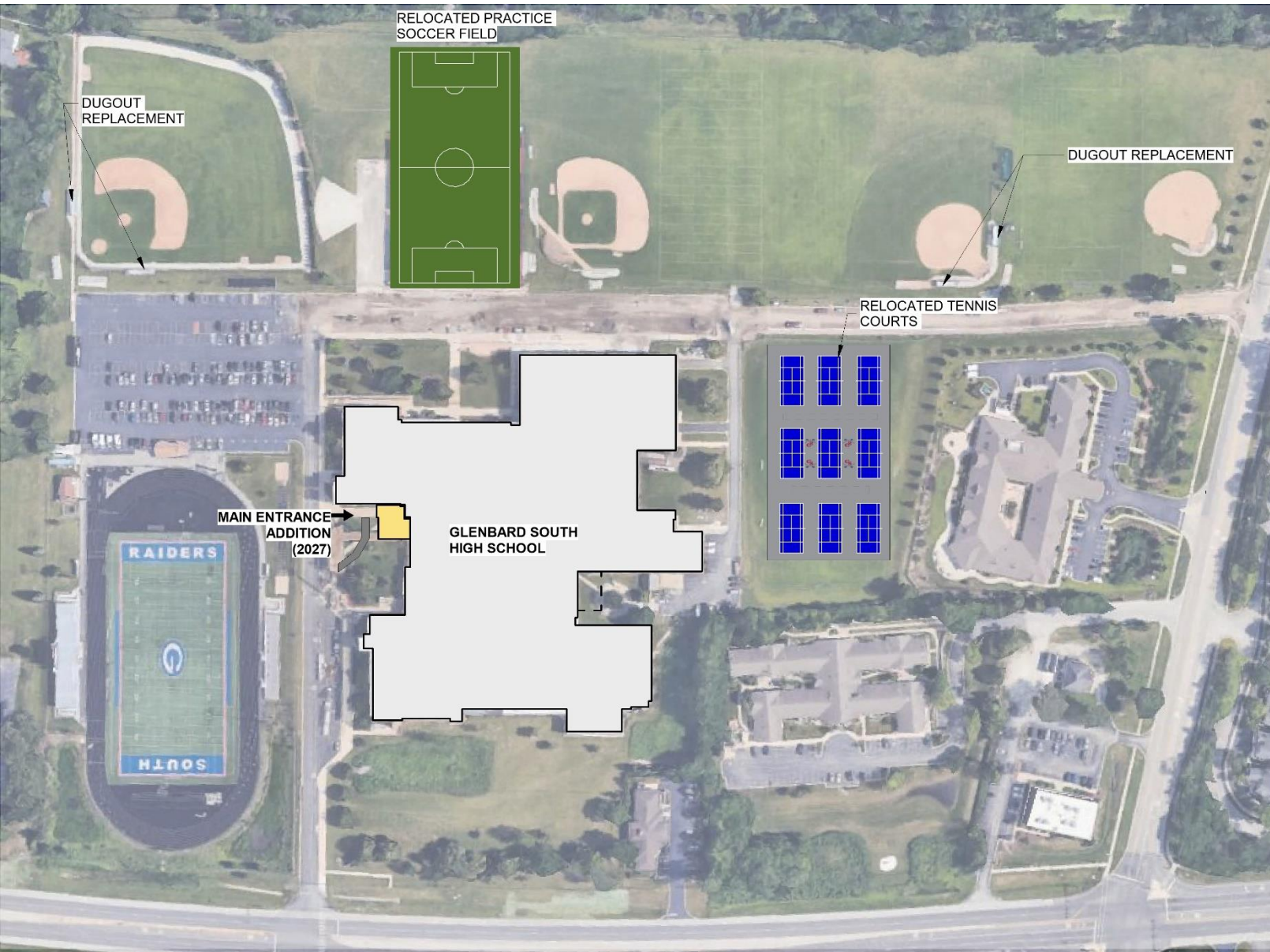


WEST ELEVATION - 2025 CAPITAL IMPROVEMENTS



# South High School

## Design Progress



### SITE PLAN IMPACTS

- Main Office Addition
  - Accessible route to primary main entrance
- Tennis Court Replacement (Summer 2025)
  - Relocation of practice soccer field
- Future Considerations for stadium entrance, concession, and team room improvements





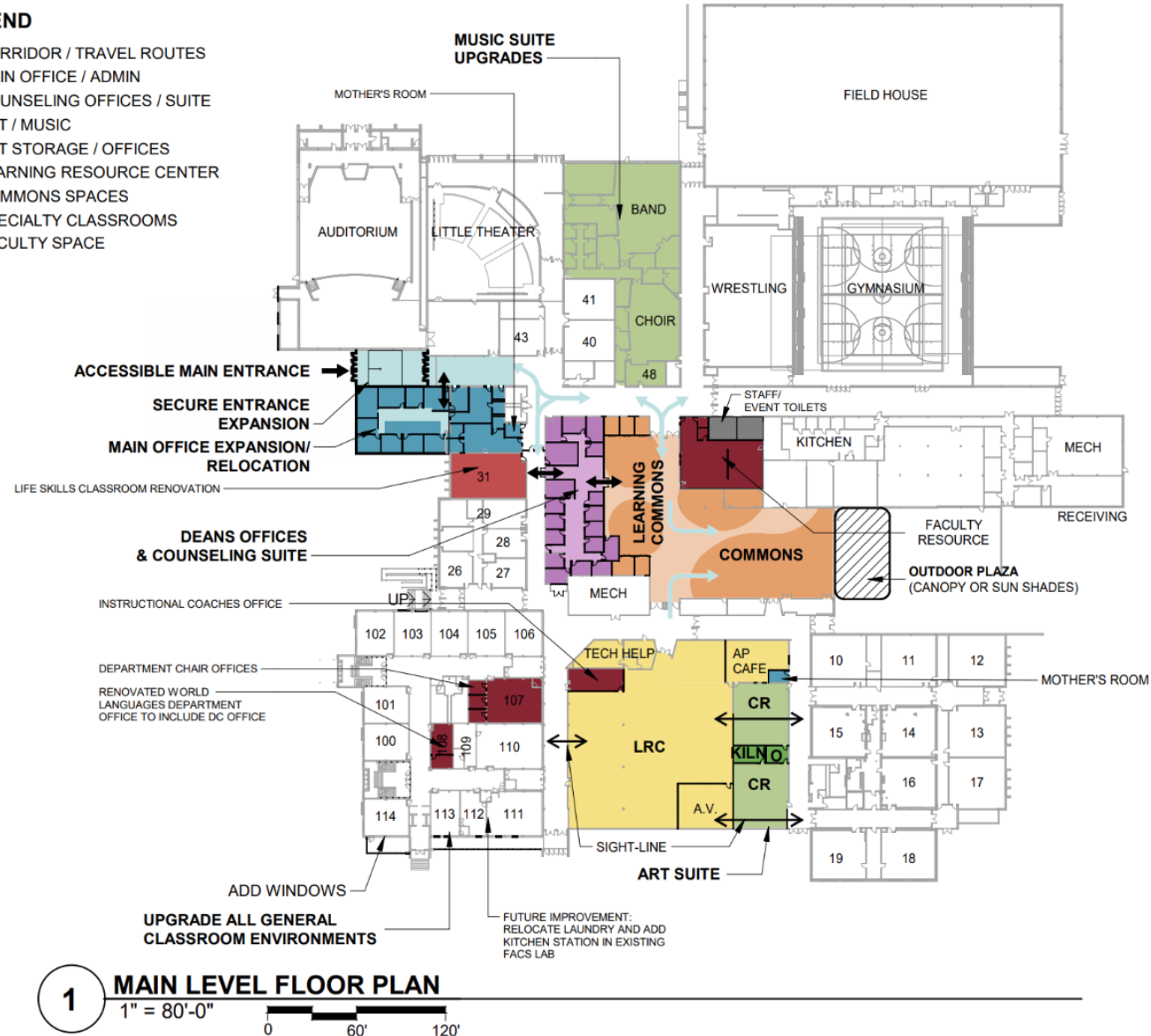


# South High School

## Design Progress

### LEGEND

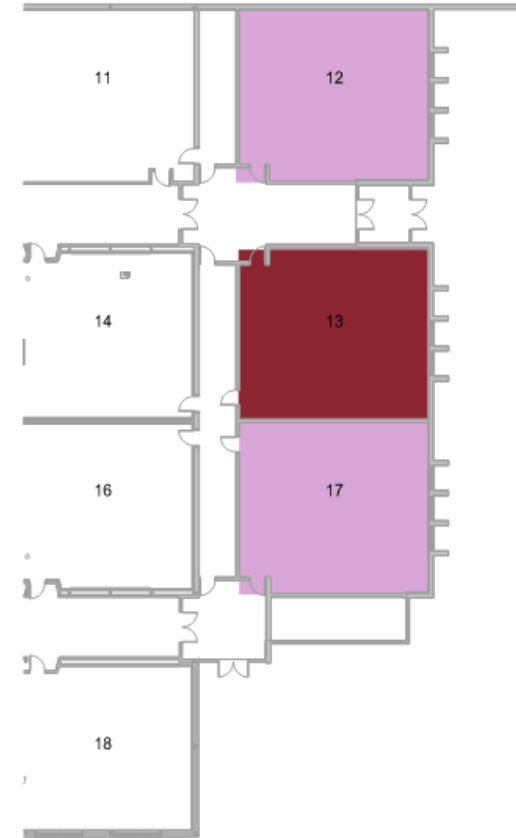
- CORRIDOR / TRAVEL ROUTES
- MAIN OFFICE / ADMIN
- COUNSELING OFFICES / SUITE
- ART / MUSIC
- ART STORAGE / OFFICES
- LEARNING RESOURCE CENTER
- COMMONS SPACES
- SPECIALTY CLASSROOMS
- FACULTY SPACE





# South High School

## Summer 2026 Renovations



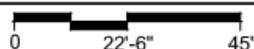
### 100 LEVEL TOWER RENOVATIONS

- Classroom Finishes Refresh
- Added Windows on North and South Elevations
- Security and Accessibility Upgrades at Classroom Doors
- FACS Lab renovations
- Corridor Renovations
- Bathroom Renovations
- Science Lab Finish Upgrades in Rooms 12, 13, 17

1

#### FIRST FLOOR TOWER

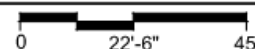
1" = 30'-0"



2

#### FIRST FLOOR SCIENCE

1" = 30'-0"







# West High School

## Construction Documents Phase

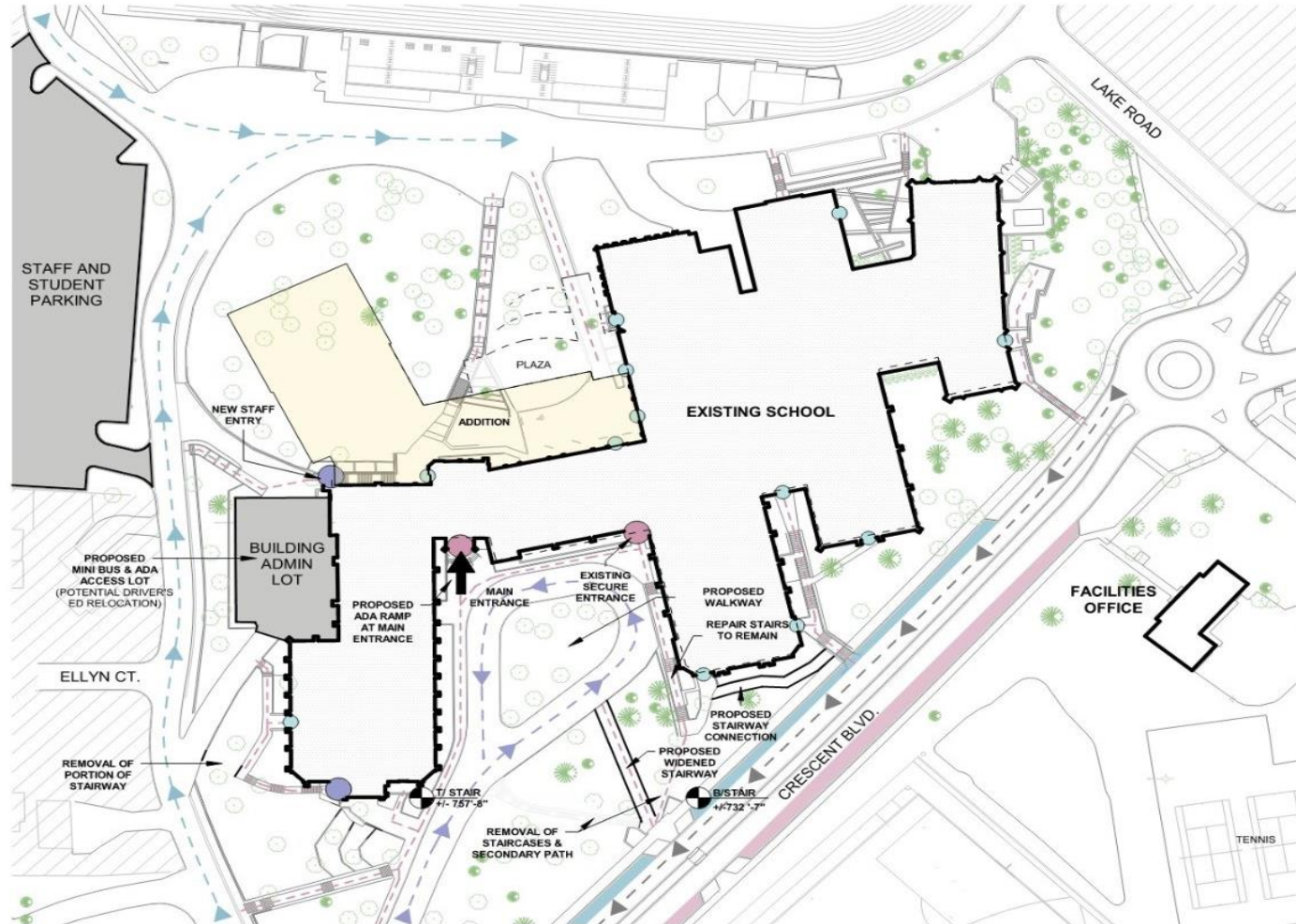
### Upcoming Milestones:

- Ongoing Core Planning Group Meetings
- Village Pre-Submission Meeting – March 20, 2025
- Summer Construction Begins June 2025



# West High School

## Design Progress



### PROPOSED SCHOOL ADDITION & SITE IMPROVEMENTS

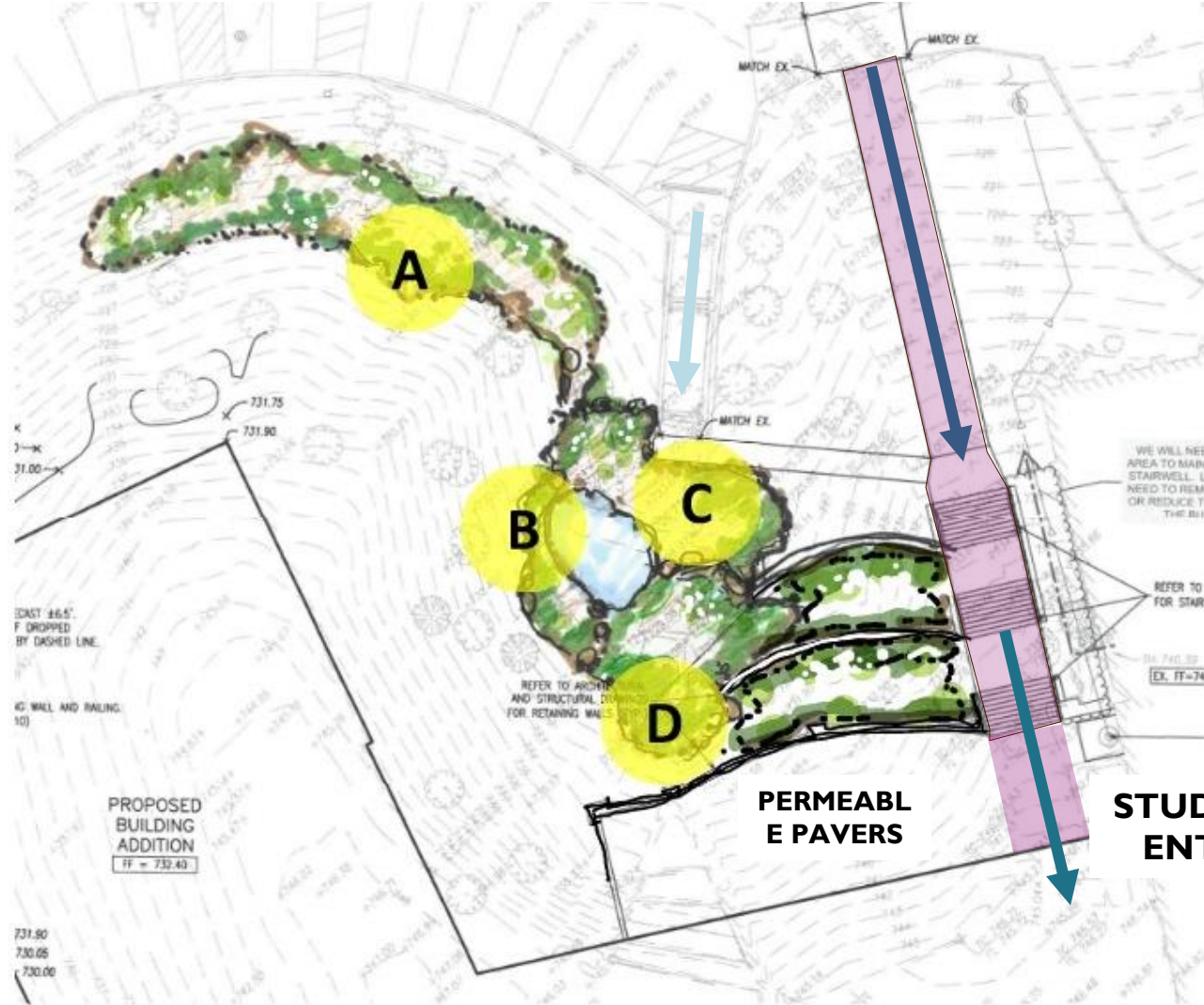
#### LEGEND:

- SUN PATH
- VEGETATION
- RESIDENTIAL AREA
- PARKING
- ACCESSIBLE PARKING
- VEHICLE CIRCULATION
- MAIN ENTRANCE
- AUTHORIZED ENTRANCES
- PROPOSED ENTRANCES
- EXIT DOORS
- STUDENT PERMIT STREET PARKING
- VISITOR PARKING
- PEDESTRIAN CIRCULATION
- STUDENT DROP-OFF/PICK-UP
- HOPEWELL BUS AND EMERGENCY VEHICLE ACCESS
- BUS DROP-OFF/PICK-UP





**GLENBARD THSD 87**  
**GLENBARD WEST HIGH SCHOOL**  
**LANDSCAPE PLAN**  
**DESIGN CONCEPT**



**Legend**

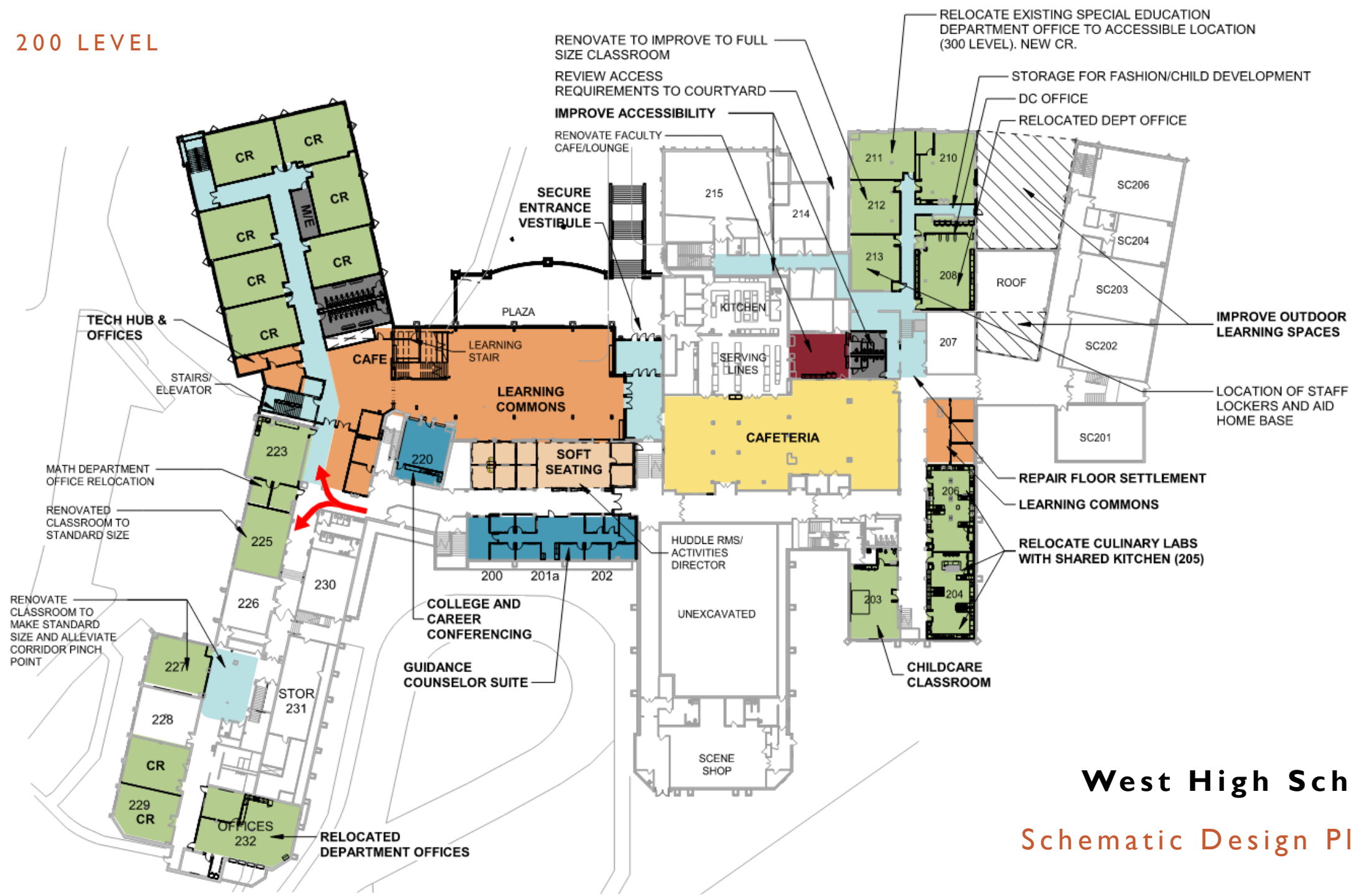
- A: Prairie Garden Walk**
- B: Pond with Waterfall**
- C: Lower Garden-  
(Japanese Style)**
- D: Upper Garden-  
(Shakespeare Style)**

 **POSSIBLE  
SNOW MELT  
SYSTEM**

**Locations for:**

- Memorials, class gifts, etc.
- Victory Bell

## 200 LEVEL

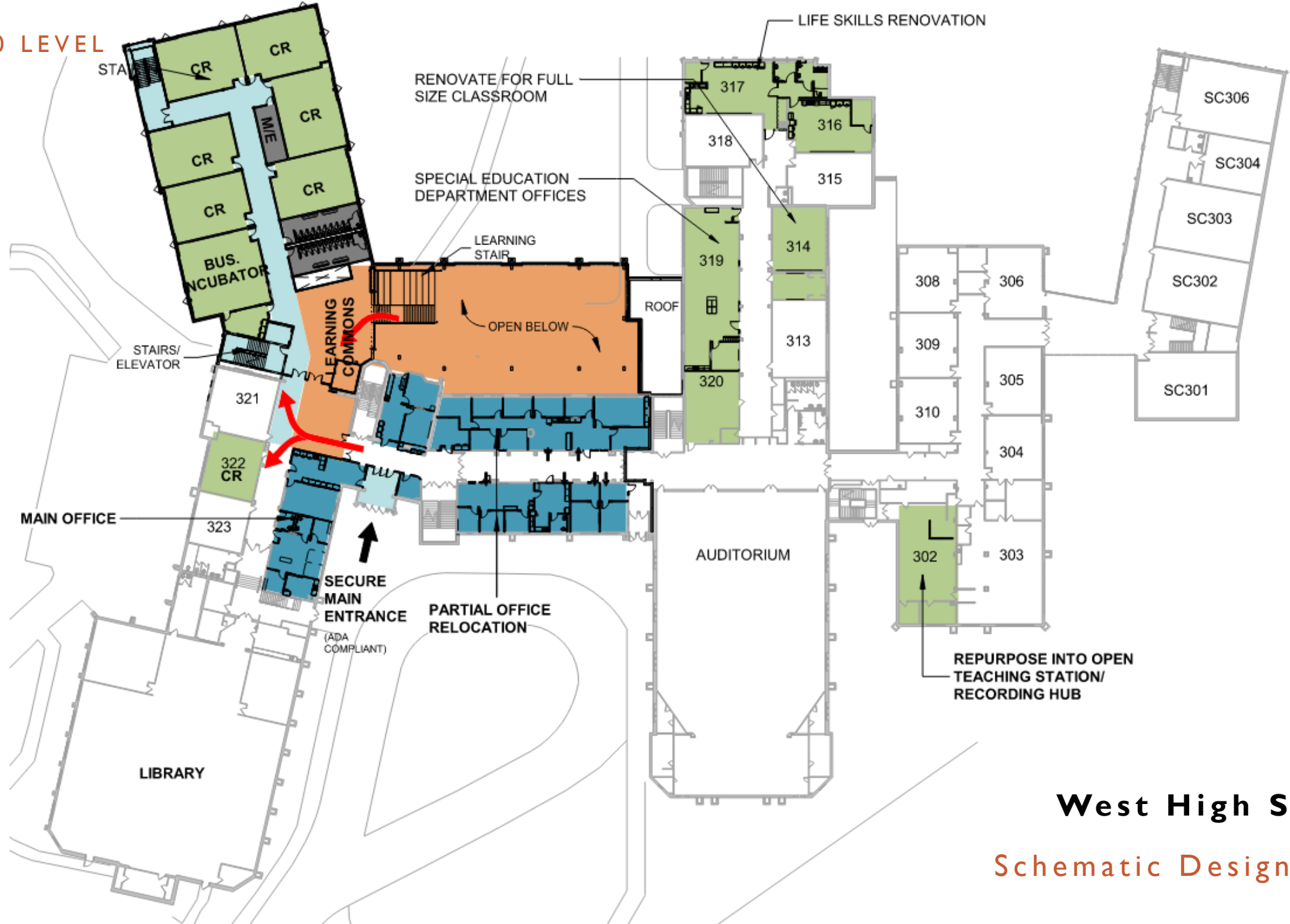


**West High School**

**Schematic Design Plans**



300 LEVEL



**West High School**

**Schematic Design Plans**



Design Progress

West High School

NORTH VIEW OF COMMONS AND CLASSROOM ADDITION







Performance  
Services

WEST VIEW OF CLASSROOM ADDITION



Design Progress

West High School







## GATHER SPACES

### Student Commons



Student Commons at New Addition

### Small Commons



Small Commons (200/300 level)

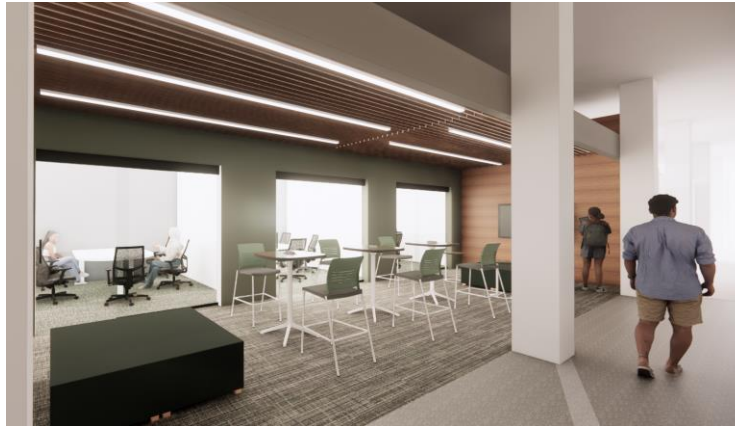


Cafeteria

## BREAK OUT HUDDLE SPACES



Large Huddle (Renovated Space)



Open Huddle / Break Out (Renovated Space)



Break Out Rooms (Renovated Space)





## ADMIN SPACES

### Typical Admin Suite (Counseling Suite)



Counseling Suite – Renovated Space



## CLASSROOM / CORRIDOR SPACES



Classroom at New Addition



Corridor at New Addition

## PERFORMANCE / MULTI PURPOSE SPACE

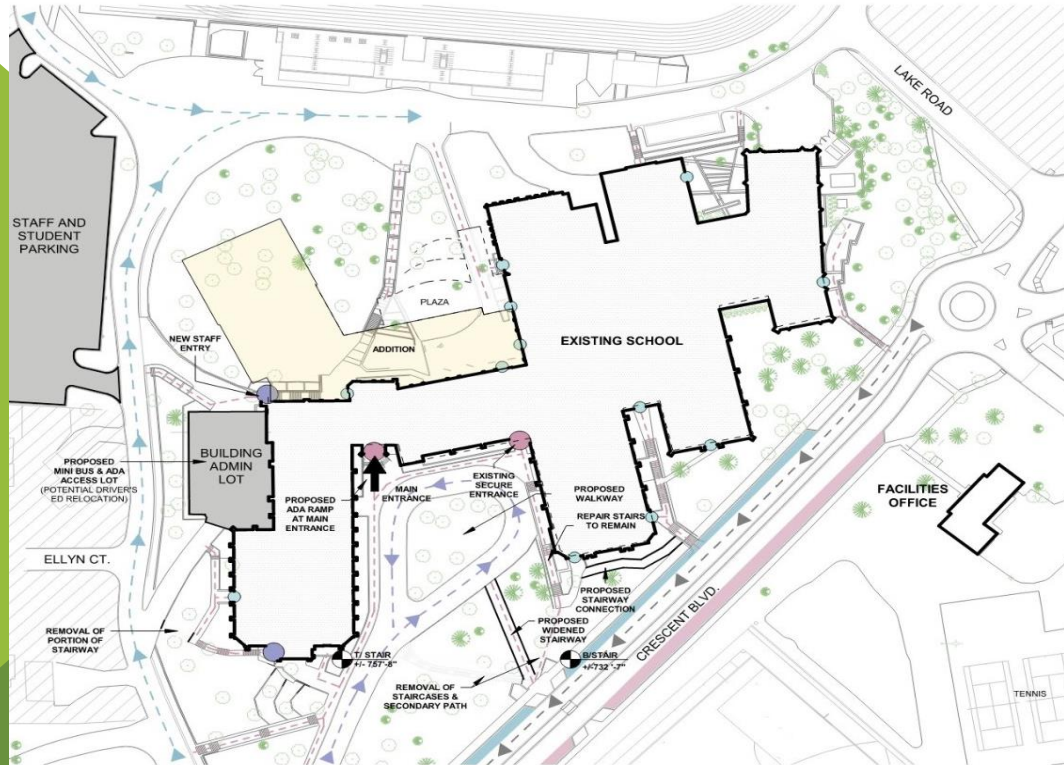


“Black Box” at New Addition



# West High School

## Village Approval Updates



Standard THSD 9/24/03, Gilbane West Addition and Renovations.rvt

SD 2

### VILLAGE OF GLEN ELLYN

- Pre- Application Submission – 3/7/25
- Fire Dept Review – 3/10/25
- Pre-Application Meeting – 3/20/25
- Glen Ellyn PD – Traffic Review – 3/25/25
- Anticipated Zoning Review and Public Hearing – May 2025
- Anticipated Village Board Approval – June 2025